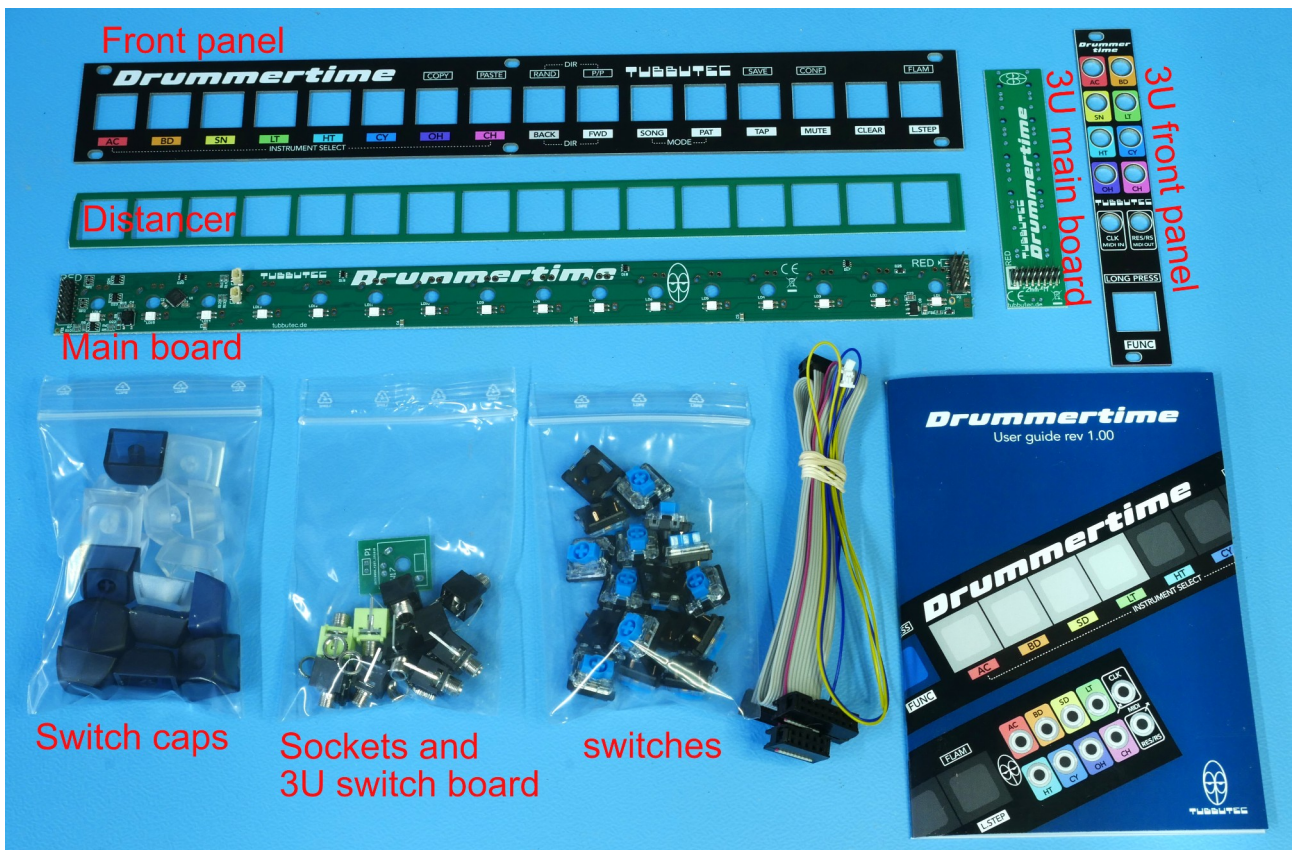


Drummertime DIY construction guide

60HP + 3U version



Introduction

This guide explains how to assemble the Drummertime DIY kit.

Basic soldering skills are required, but the process is straightforward.

Only a through-hole (THT) components need to be soldered.

Required tools:

- Soldering iron
- Optional: tool for tightening threaded nuts

This guide covers assembly only. For usage instructions and additional information, please refer to the Drummertime User Guide.

Installing the switches



Take the front panel and press the switches into the square openings as shown above. The image below illustrates the correct orientation: the switch pins should be at the top and the rectangular opening at the bottom.



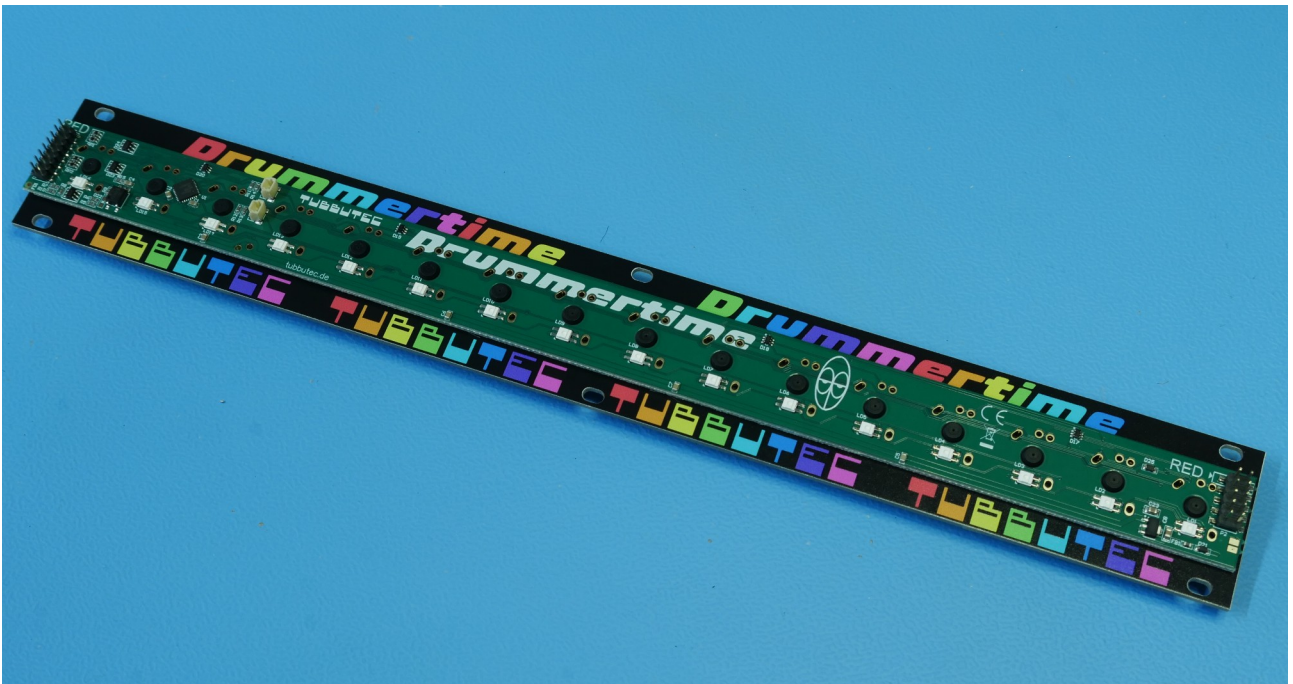
Placing the distancer

Position the distancer board behind the buttons as shown below.



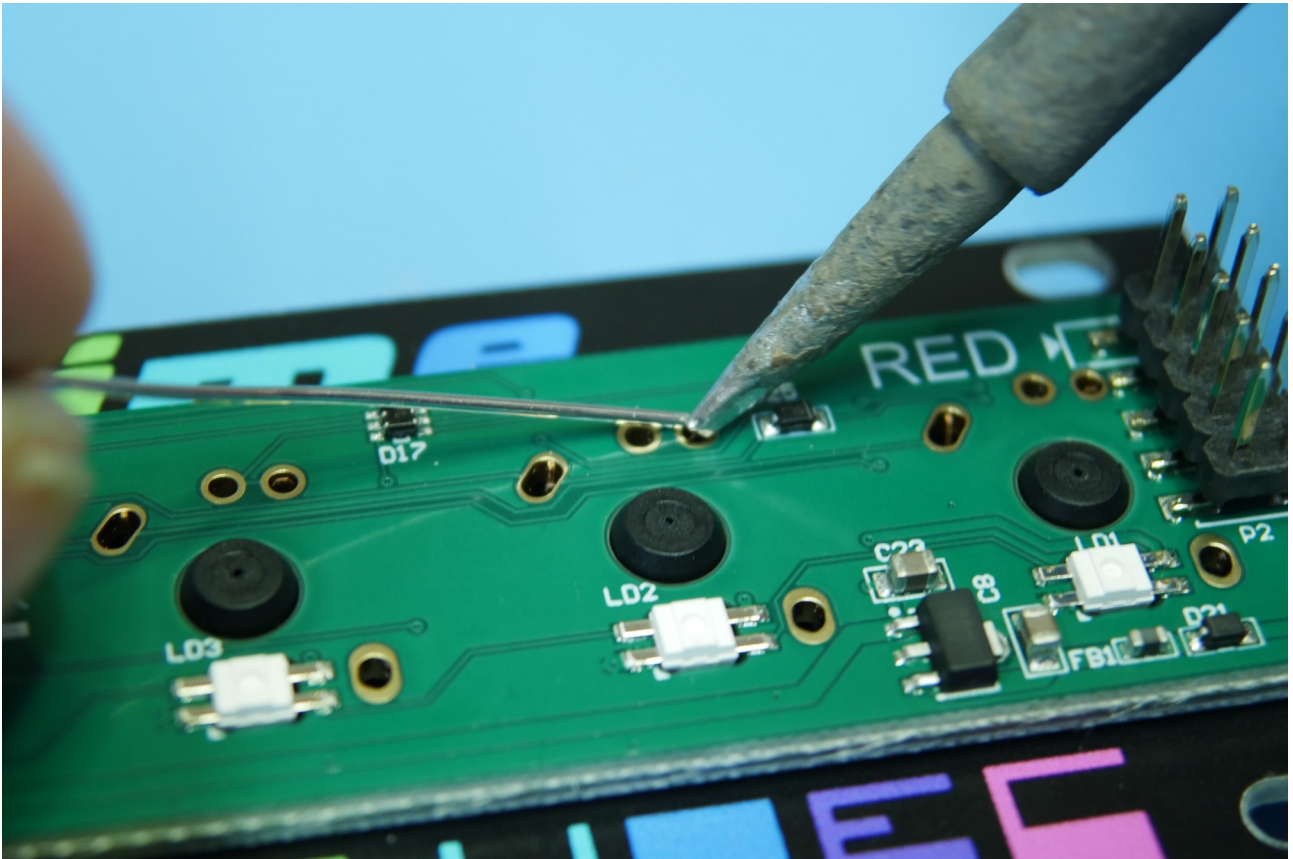
Placing the mainboard

Place the Drummertime main board on top of the distancer board. Ensure that none of the pins are bent and that all pins pass cleanly through the pads of the main board. The assembly is now ready for soldering.

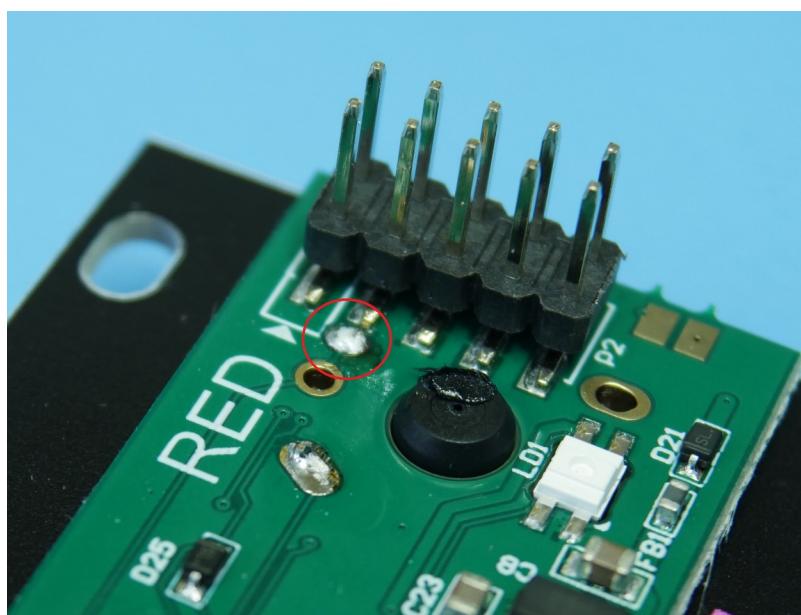


Soldering the switches

Solder all switch pins. Make sure that the stack-up of front panel, distancer and mainboard is well aligned and firmly pressed together. You may want to solder just a few pins first to check alignment before soldering the remaining ones.



A little bit of care must be taken with this particular solder point. You don't want to create a solder bridge to the power connector next to it.



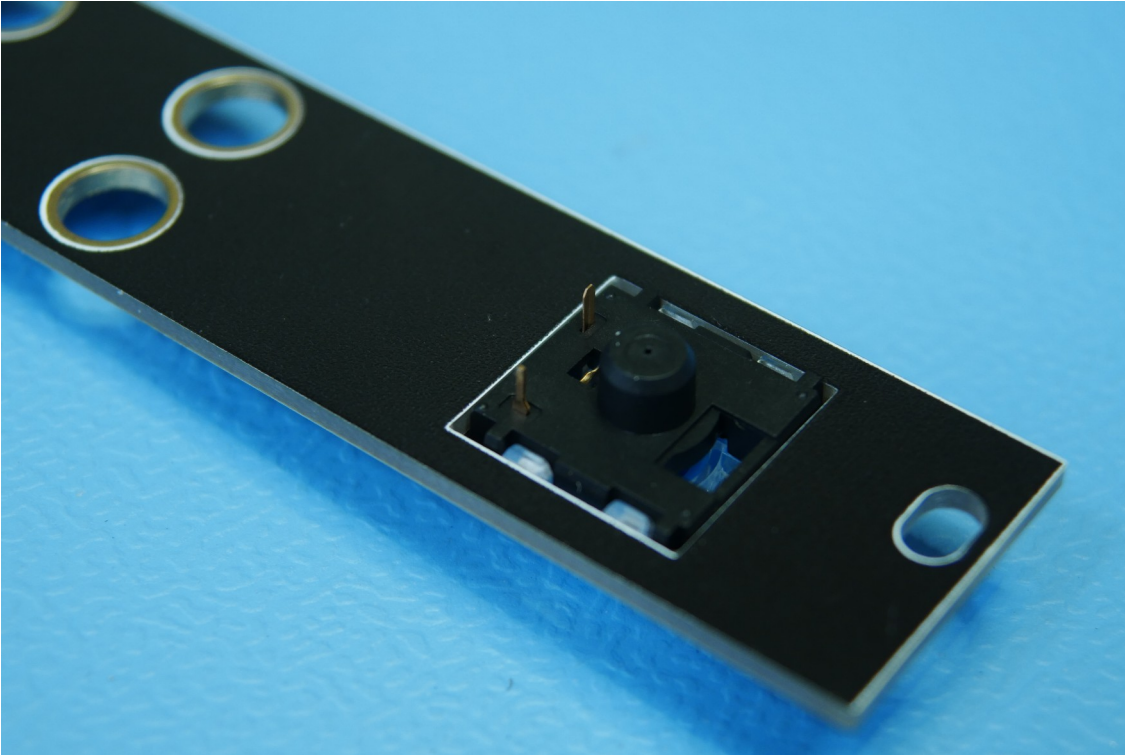
Finishing the 60HP module

To complete the 60HP module, attach the switch caps to the switches. We recommend this layout:



3U module switch

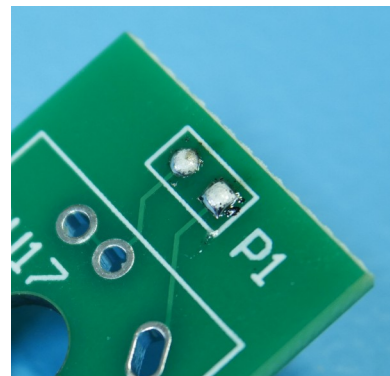
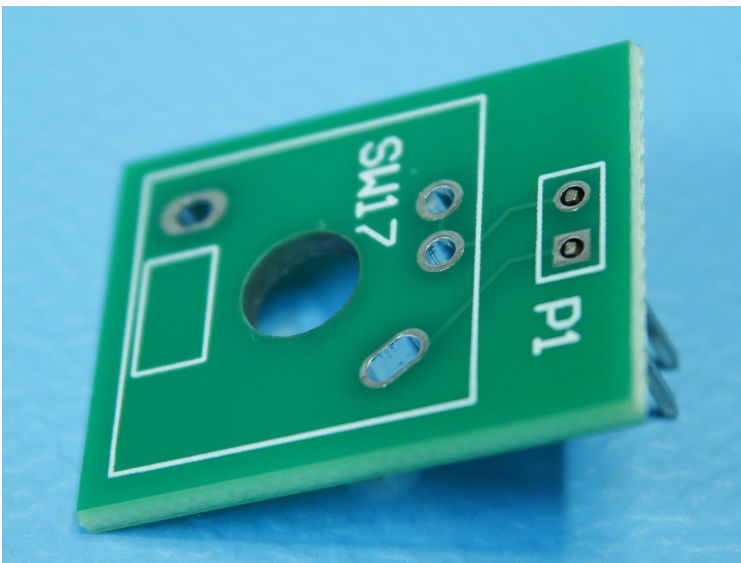
Press the remaining switch into the rectangular hole in the 3U front panel as shown



Prepare the 3U switch board

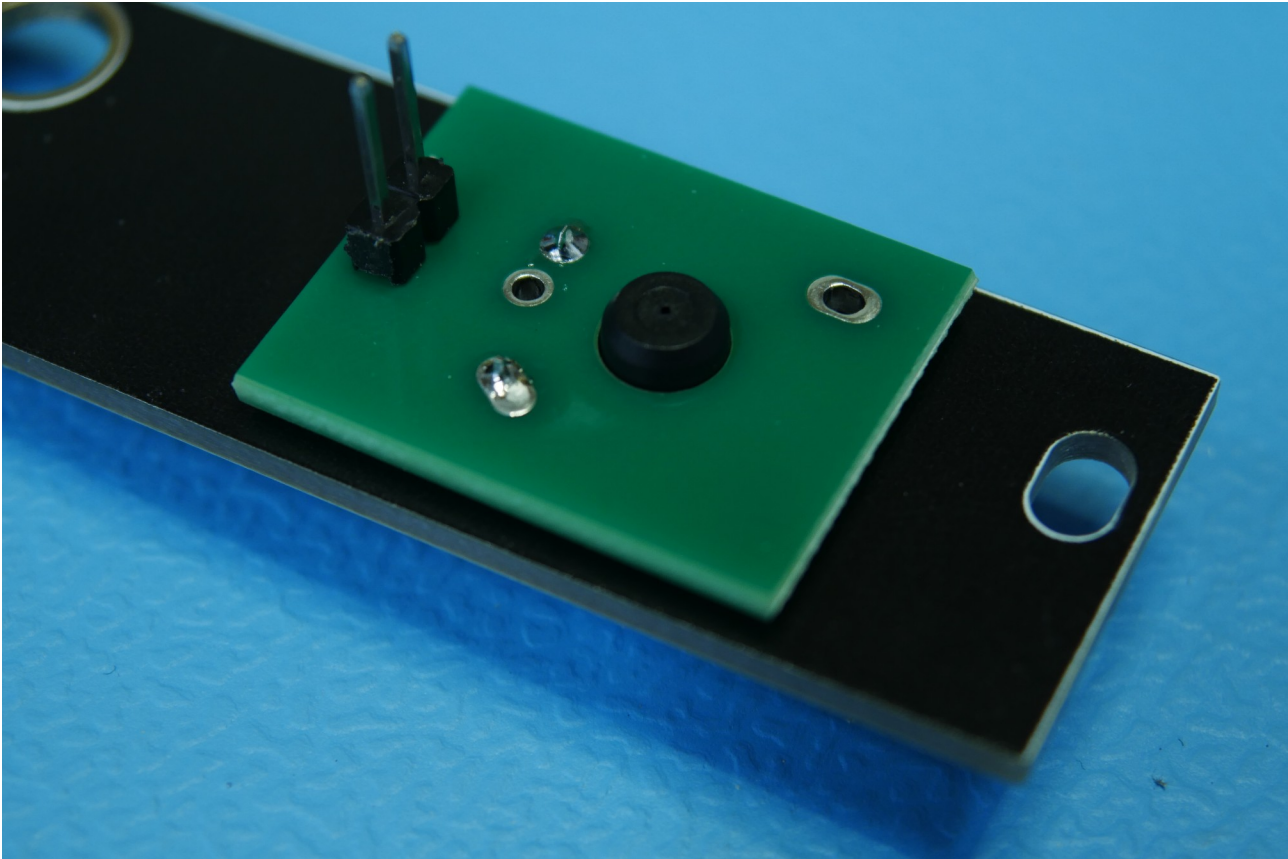
Insert the pin header into the 3U switch board as shown below. Slide the black plastic spacer slightly until the header pins just protrude through the holes.

Once positioned correctly, solder the header to the board.



3U module assembly

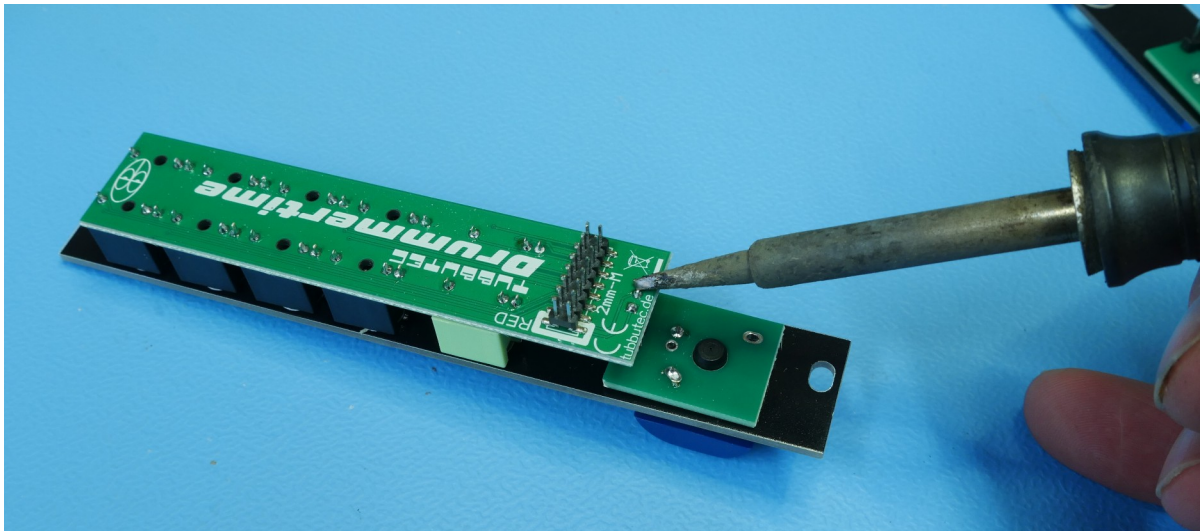
Put the 3U switch board onto the switch as shown below and solder the two switch pins.



3U sockets and 3U assembly

Insert the ten jack sockets into their designated pads on the 3U main board. The upper 8 sockets need to be black ones, while the two on the bottom need to be green.

Next, place the front panel with the mounted components on top of the sockets and make sure the pin header's pins poke through the pads on the 3U main board. Finally, turn the whole assembly over and solder the sockets in place. Also solder the pin header.



To complete the 3U module, secure the sockets using the knurled nuts and put the blue switch cap onto the switch.

